



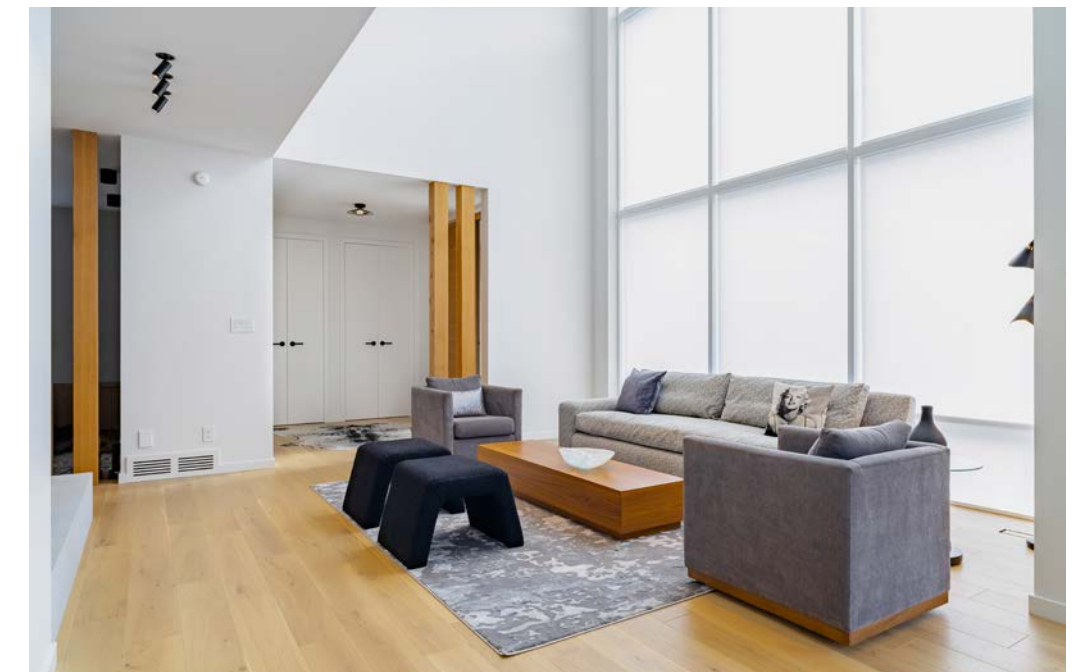
age that reflected these values and included splashes of colour, playful moments, and clean lines. They love to ski, so an alpine theme was explored with fir posts that reflect tall vertical windows and triangle-textured tiles that mirror a mountain setting—it is touching that there are so many reminders of this sprinkled throughout their home. So much of the design was about harnessing both natural sunlight and moonlight and framing as many views of the trees as possible.”

Showcasing a spectacular curtain wall feature, the kitchen, dining, and great room were positioned to take advantage of these light-infused areas. “The home faces south so the thought was why not capture three stories of glazing and interconnect the floors for volume with the main floor rising to the lofted third level,” explains Andre.

“When the owner suggested we have a loft as well, the immediate issue was

height restrictions that posed some issues. I said, ‘challenge accepted’, and now the loft accommodates a family-friendly retreat with a rooftop patio where one can relax amongst the tree tops.” Featuring a slight slope to the left on the second level, the home was redesigned for stylistic interest and to maximize scale. “Eventually, we found a way to get what we wanted that also advanced architectural expression,” cites Andre.

The clients were perfectly in sync with what R Luxury Homes had to offer and took full advantage of their talents and abilities to create a personal reflection of their lifestyle. “We moved into a house before we had kids and grew out of it. We loved this lot due to its size and location plus it was practically next door,” notes the lady of the house. Desiring a brighter decor that was a big change from their last home, they went for their dream to live in a glass house.



An enclosed staircase accommodates additional storage in the great room where a three-sided fireplace clad in Airy Concrete Caesarstone warms the setting that rises to 23-foot heights with dining room and partial kitchen views.

Cedar columns offer style and separation, extending the length of the home, and provide a warm complement to engineered European oak hardwoods on the light-infused main level.

White, touch latch, Ultramatte upper cabinets house integrated wall ovens above Rift White Oak base cabinetry that display flush-mounted edge pulls in brushed gold. Floating shelves and a backsplash in fluid Cambria Annica quartz host motion sensor LED lighting and aligns the integrated vent-hood shroud, while Hanstone Royale Blanc countertops offer a smooth complement to the gourmet kitchen.